



BRS-RV - Radar Viewer

Features

- Integrated display & control over a full-featured radar
- Best fit for a marine radar system
- IMO regulations and standards compliant
- 1920 x 1080 resolution, 16:9
- Dual PPI for safer navigation
- 100 targets trackable by ARPA
- Display of up to 500 vessels identified by AIS
- Supplementary functions
- Both conventional analog & digital interfaces

The BRS-RV is a radar image plotter that encompasses the embedded hardware and the GUI viewer. The radar viewer has been so designed to comply with the specifications in IEC 62388. The straightforward graphical user interface allows users to access most functions with a single click and the layout of the menus is best suited to marine radars. On top of the general radar utility functions, the BRS-RV provides users with ARPA, one of the most important functions for safe navigation. The reliability of the software has been tested and verified by a certified institute.

Radar utilities

While displaying radar image, the BRS-RV provides users with easy access to all functions with a full-featured BRS-MM radar signal processor, including STC control, clutter filtering, target enhancement and PRF staggering as described in the standard, IEC 62388. The implementation of the software complies with IEC 62288, 61162 and 60945 as well as the relevant IMO regulations. The dual PPI and guard zone functions are also provided for safer navigation.

ARPA

ARPA is another costly, but effective option for safe navigation. The BRS-RV invokes a state-of-art adaptive filtering technique in implementing ARPA. It tracks as many as 100 targets either automatically or manually. The tracking information shown on the display is updated every second. Once any target approaches within the preset boundary, an alarm will be issued to warn the operator of the possibility of collision. The ARPA in cooperation with AIS enhances navigational safety. The tote table in the display manages and shows up to 6 targets identified by ARPA and AIS.

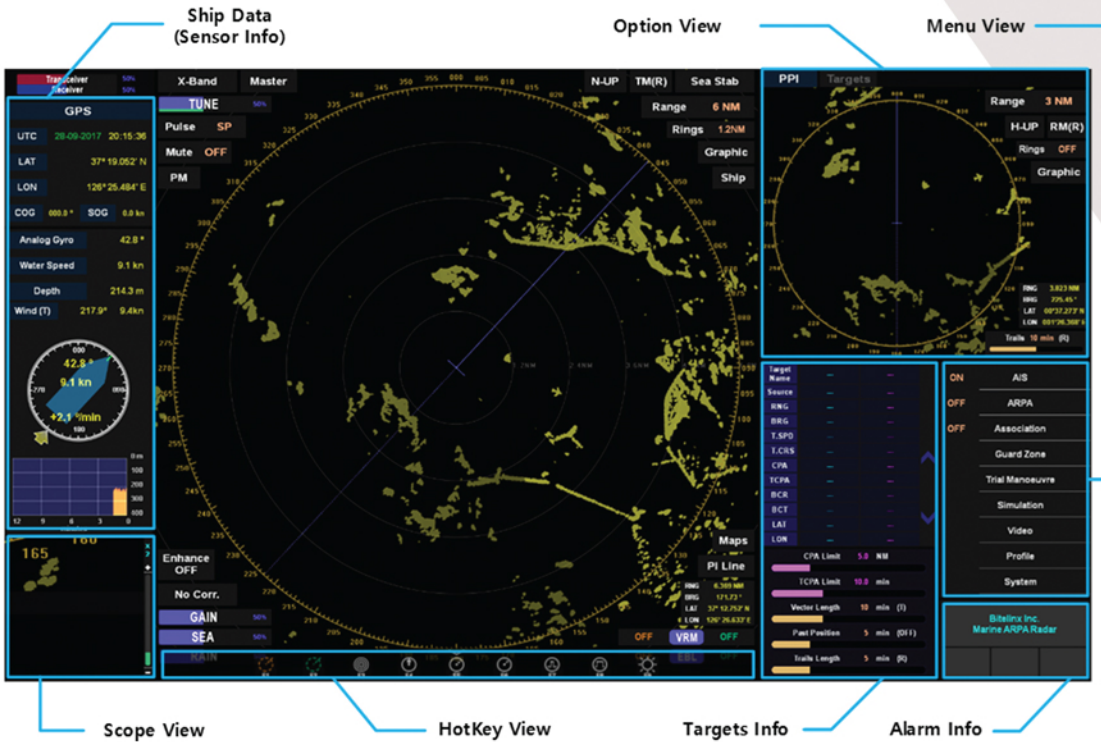
Other features

There are some supplementary functions that add value to the BRS-RV. The scan-to-scan filtering reduces the probability of false detection. A variety of diagnostic and monitoring functions enable the user to not only take a proper action against a defect in advance but also maintain the radar system more transparently. The BRS-RV supports interfaces with such adjacent systems as AIS for safe navigation.





Display layout



Display

Resolution	1920 x 1080 (16:9)
Orientation mode	Head-up/North-up/Course-up
Presentation mode	RM(T), RM(R), TM
Range scale	0.125 to 96NM
Off-centering	Up to 75% of range scale
Sensors	GPS, Gyro, Log, Depth, Wind

Tracking

Tracker capability	Up to 100 targets
AIS display capability	Up to 500 targets (activated + asleep)
Target data list	All data simultaneously displayed

Graphics

Cursor	Continuous display of Range/Bearing and Lat/Lon
EBL/VRM	Center on the own-ship or any location
Scope	Enlarged view centered on the cursor

For further information, Please contact : Bitelinx Inc.

#704, DoosanVenture-digm
 250, Hagui-ro, Dongan-gu, Anyang-si,
 Gyeonggi-do, Korea Republic, 14056
 Tel)+82-31-426-0987
 Fax)+88-70-4009-3929
 Email) hkim@bitelinx.com
 URL) http://www.bitelinx.com